

# SBAC Test

April 21-April 30



The Smarter Balanced Assessment will be given to 11<sup>th</sup> grade students for the first time this spring.

**JUNIORS – IT'S ALL ABOUT YOU!**

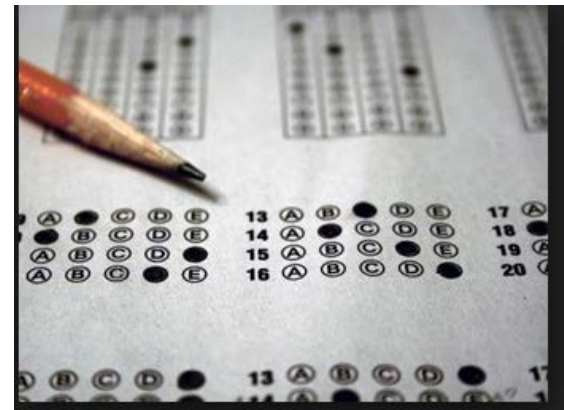
# What is SBAC

- The SBAC exam will measure students' progress towards meeting the new common core standards in English and Math
- PGHS students have been working on these standards for the past two years.



# What is on the test?

- The SBAC exam is not like any standardized test you have ever taken.
- Students take the exam on the computer.
- Instead of “fill in the bubble,” type questions, students will be asked to underline text to cite evidence, highlight answers within a passage, drag and drop items, match items, graph, add points and lines and listen to audio clips. There will also be some multiple choice items.



# EAP



- The SBAC test also includes the CSU EAP exam (Early Assessment Program).
- The EAP is used by California State Universities (CSUS, SDSU, etc) to determine if a student is ready for college level English and math.
- If a student does well on this exam, they will be exempt from taking the English Placement Exam or Entry Level Math Test before attending a CSU college.
- You will receive a score report that will tell you your EAP status (exempt, conditionally exempt or not yet ready)

# How EAP benefits me


- Students who score ‘college ready’ on the EAP exam will not have to take placement exams for CSU and community colleges.
- Students who are not “college ready” must demonstrate proficiency by
  - scoring 500 on SAT Reading - 550 on SAT Math
  - 22 on ACT English, 23 on ACT Math
  - Earn a 3 or higher on the AP English 11 or English 12 exam.
- Take the EPT (English Placement exam) or ELM (Entry Level Math Exam) in your senior year
- Students who are unable to demonstrate proficiency through any of the above means will have to take a summer school course in math or English before attending a CSU campus.

# HOW SBAC results benefit PGHS

- PGHS has always been the top performing school in the district.
- PGHS is ranked #240 in the state (out of approximately 4,495 high schools in California)
- How are these rankings determined?

## Pleasant Grove High School Overview

OVERVIEW STUDENT BODY TEST SCORES ← TEST RESULTS!

2014 Academic Indicators		09-12 Grades	2,490 Students	109 Teachers
National Rank	#1,111	Pleasant Grove High School 9531 BOND RD ELK GROVE, CA 95624		
College Readiness Index	32.7	Phone: (916) 686-0230		
Academic Performance Index	857	District: Elk Grove Unified School District		
Student/Teacher Ratio	23:1			

Overview

# Reputation matters!

The reputation of PGHS can affect:

- An employers' perception of a PGHS student
- College admissions decisions....
  - Is it better to be average at a top performing school or average at below average school?
- Property values
  - More families want to attend PGHS than we can accommodate.

## **PGHS REDIRECT NOTICE**

Please be informed that due to continued growth in the district's Pleasant Grove region, any student who moves into the Pleasant Grove High School attendance area on or after March 2, 2015 will be redirected to Elk Grove High School (EGHS) or to Sheldon High School (SHS), based upon the location of their residence.





# Results matter!

- Data from the SBAC exam will be used by PGHS staff to assess student performance and evaluate teaching practices.
- Teachers will be able to identify what students know and don't know.

# Juniors MATTER!

- We recognize that Juniors may already be taking many exams this year (PSAT, SAT, ACT AP, etc.)
- As a result, we have tried to minimize the impact of testing on students and staff.
- Juniors will take the test in English and Math during the 6 minimum days in April. ALL other students will be in class during those days doing academic work.
- All Juniors are required to be at school (it is not an excused absence).
- \*\*AP English 11 students will take the SBAC after the AP Exam in May

# The Schedule

## Week 1 – Computer Adaptive Testing

- Tuesday, April 19: Periods 1 & 2 (117minutes)
- Wednesday, April 20: Periods 3 & 4/5 (117minutes)
- Thursday, April 21: Periods 6 & 7 (117 minutes)

## Week 2 – Performance Task

- Monday, April 25– Regular schedule
- Tuesday, April 26: Periods 1 & 2 (117 minutes)
- Wednesday, April 27: Period 3 & 4/5 (117 minutes)
- Thursday, April 28: Periods 6 & 7 (117 minutes)
  
- All test days are minimum days – 12:36 dismissal.